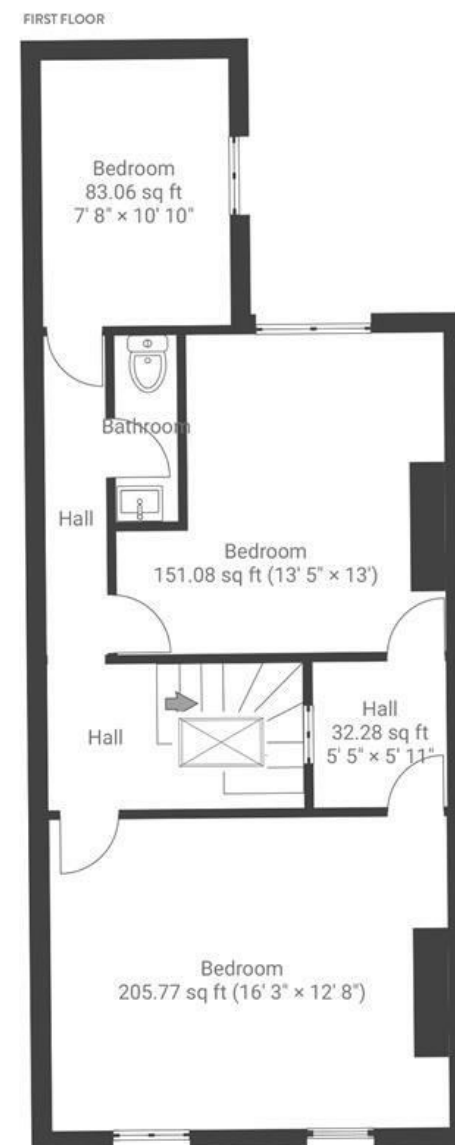


# Brook Road

## MONTPELIER

APPROXIMATE FLOOR AREA  
123.5 SQM / 1330 SQFT



**Boardwalk**

# Brook Road

MONTPELIER, BRISTOL



£510,000



3 Bedrooms



BS6 5LR



2 Bathrooms

*"I've loved living in this house. I've loved its bigness, its gorgeous floorboards and high ceilings, and I've loved filling it with family, friends and laughter. It's been great to have Gloucester Road, the city centre and harbour, green parks and fabulous cafes all within walking distance. I'll miss the vibrancy of Montpelier, the sunniness of sitting at my kitchen table with the French windows wide open, and the early morning blackbird who sings in the back yard."*

